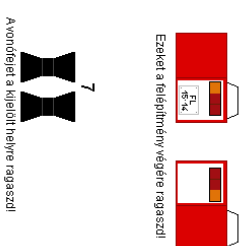
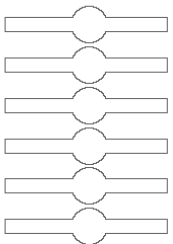


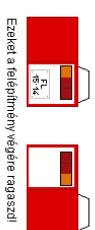
9
A hátsóhúkat ragaszd a kerekek belsejébe lévő piros keretrel



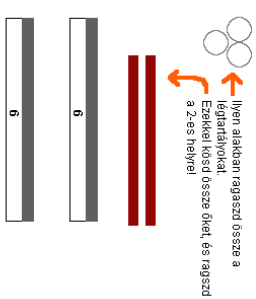
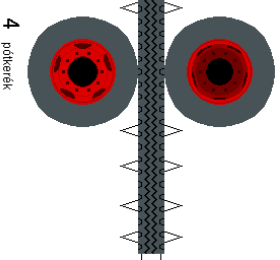
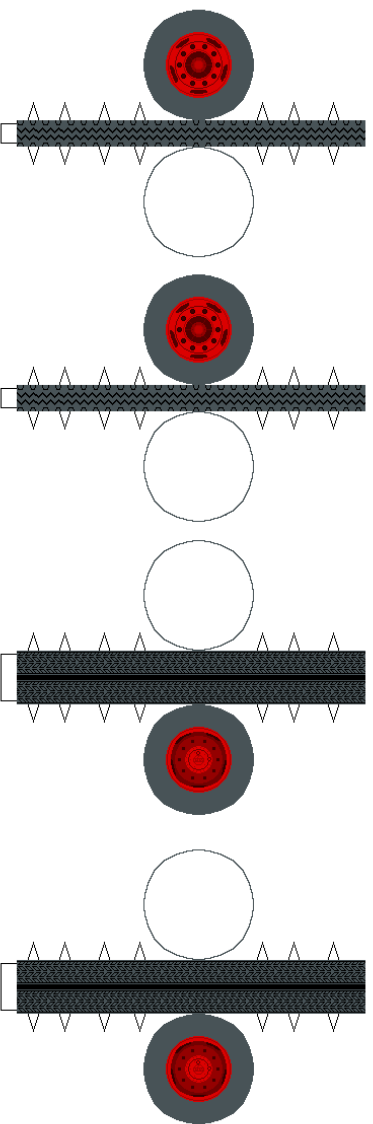
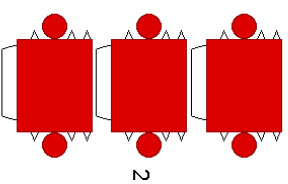
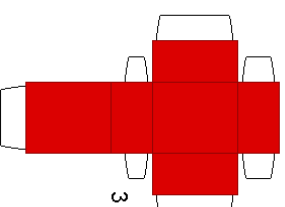
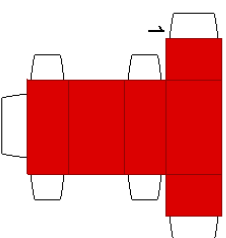
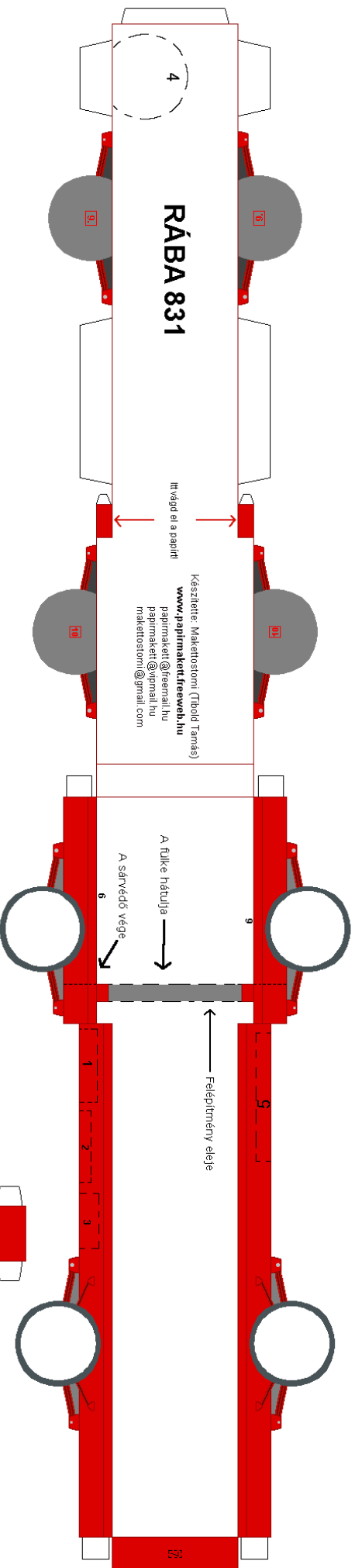
10
A hátsó hűtőlécet ragaszd az előző sablonból is, de ha az alapanyagod nem, akkor készítsd fel és ragaszd meg a végére, majd ragaszd a felüle részéket, és ugyanúgy az elölről is kapod!



7
Avonőrlépet a kijelölt helyre ragaszd!



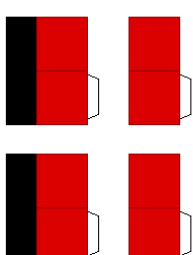
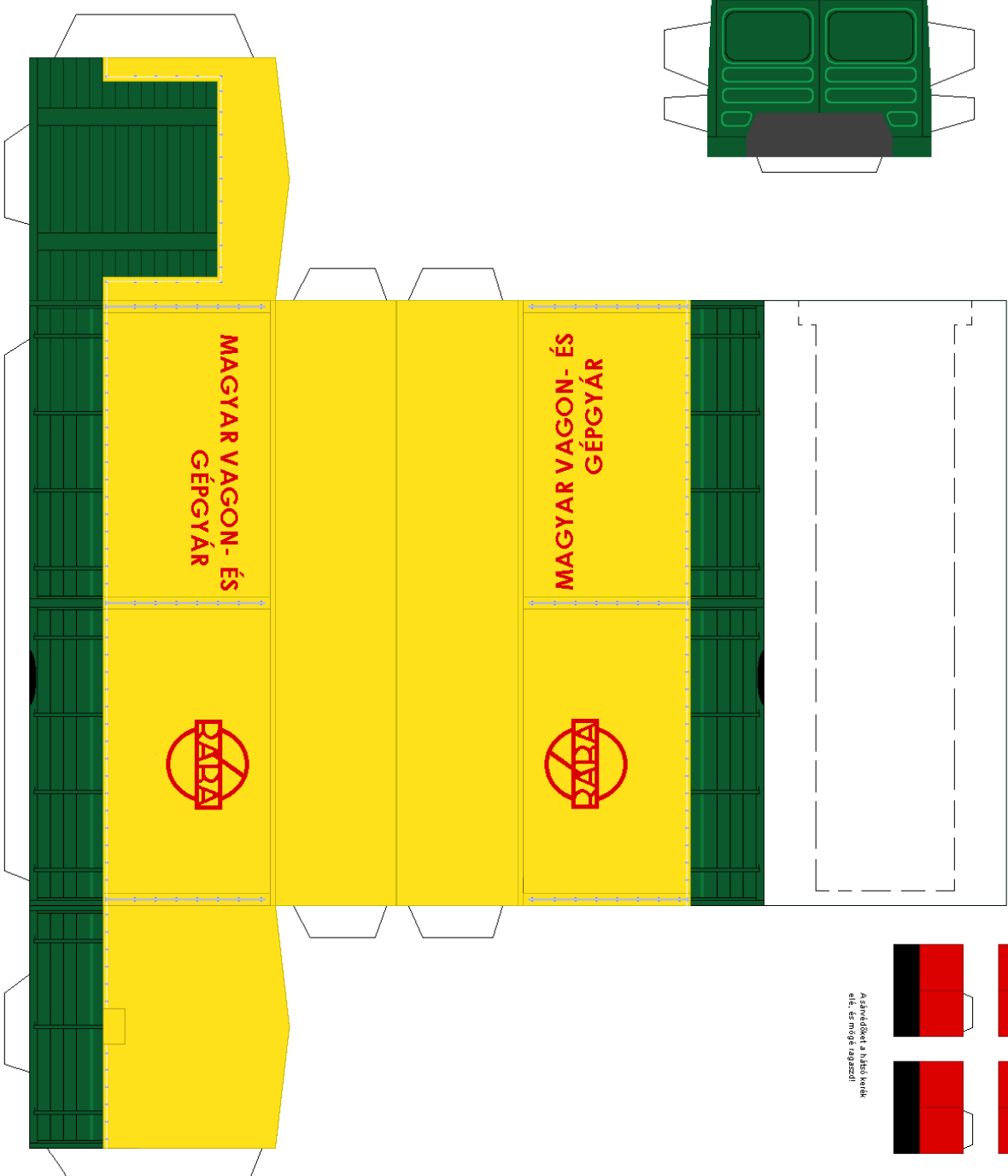
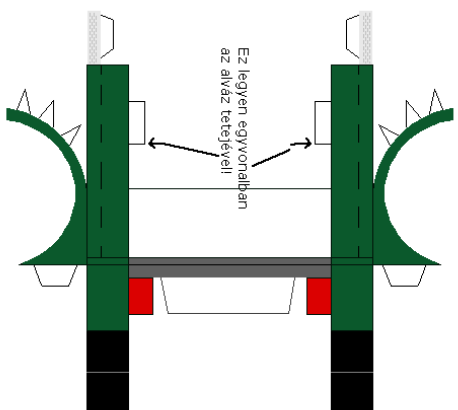
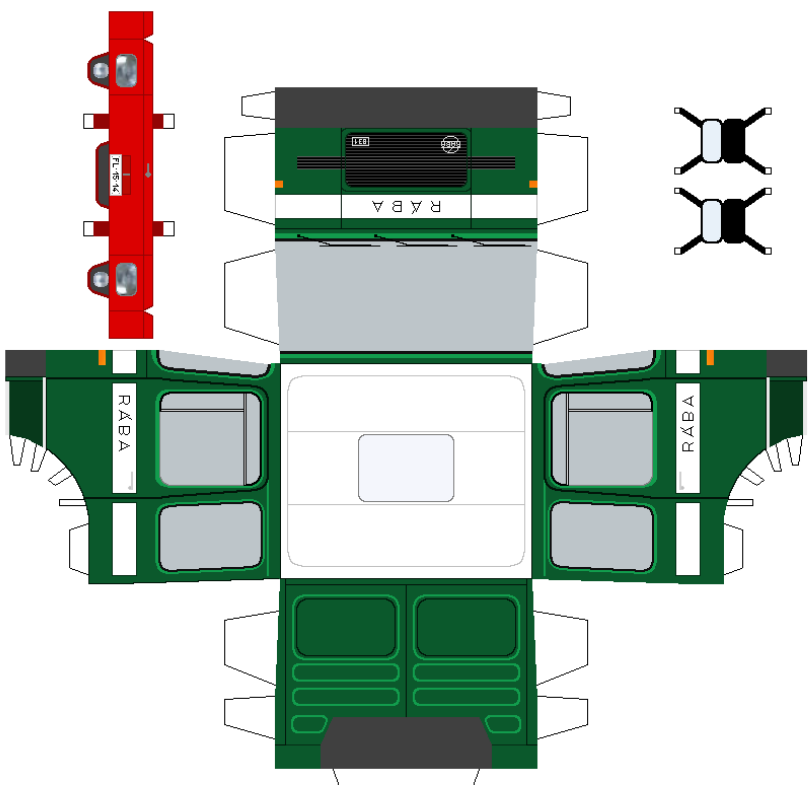
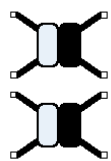
8
Ezket a felülről végére ragaszd!



6
Isten alakján ragaszd össze a felületi részeket. Ezekkel kezd össze őket, és ragaszd a 2-es helyre!

4
pótkerekek

Olvasd el a ragasztási tanácsokat is!



Az arcvédőket a kész kocsik oldalán kell ragasztani!