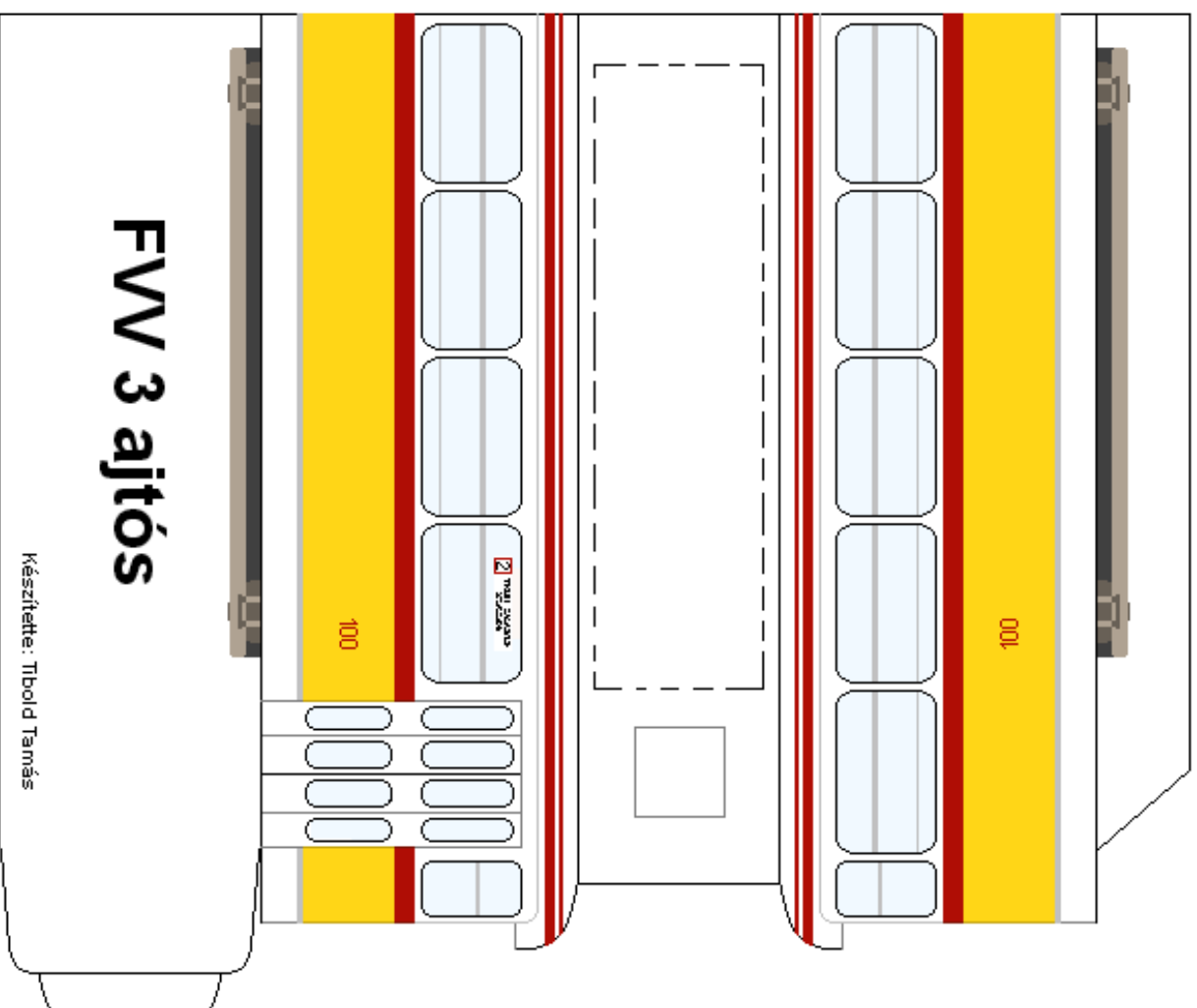
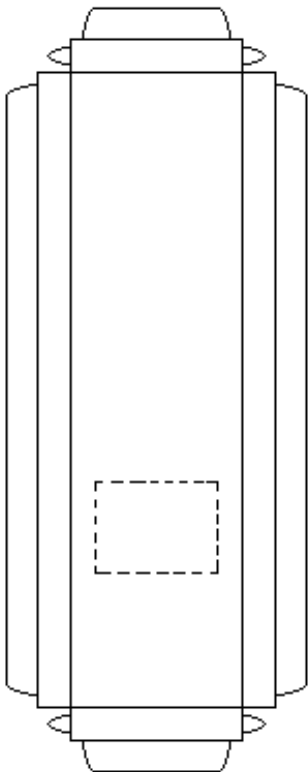


A csatlást ragaszd a villamos  
eluján levő fekete kis négyzetre!

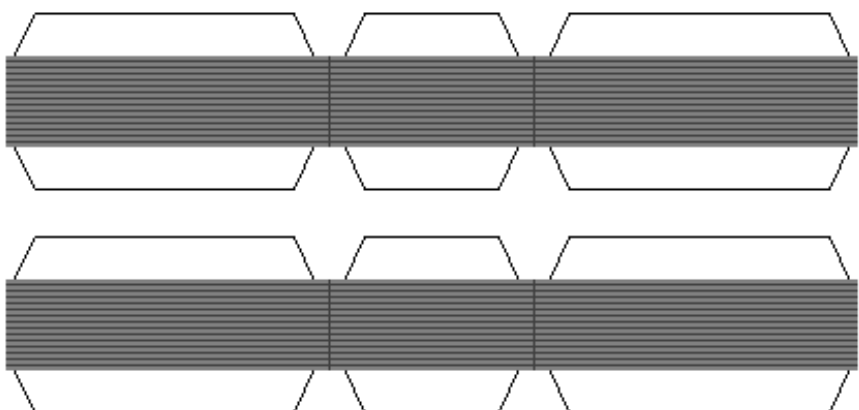
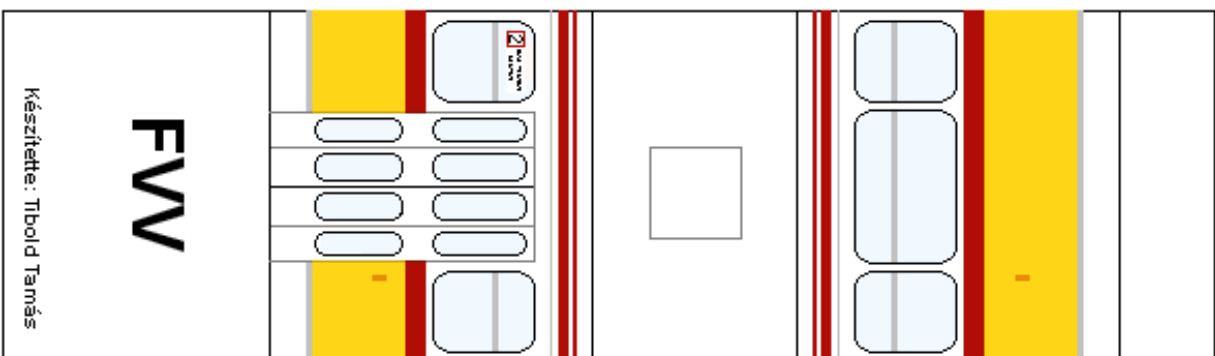
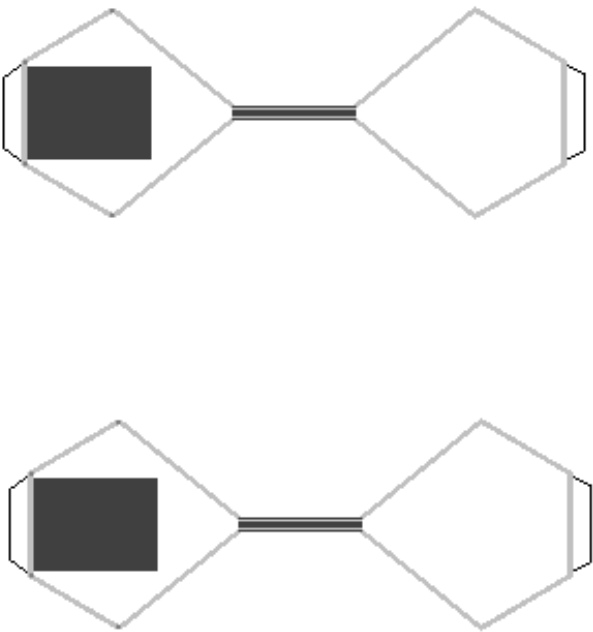
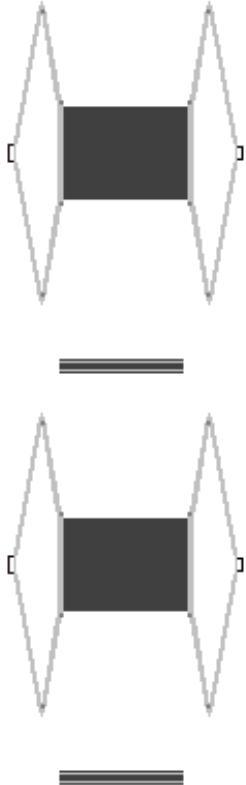


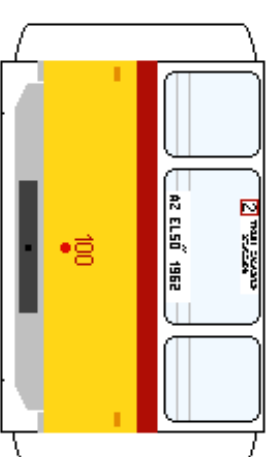
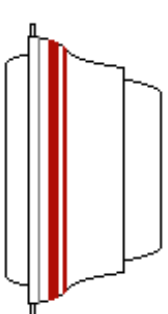
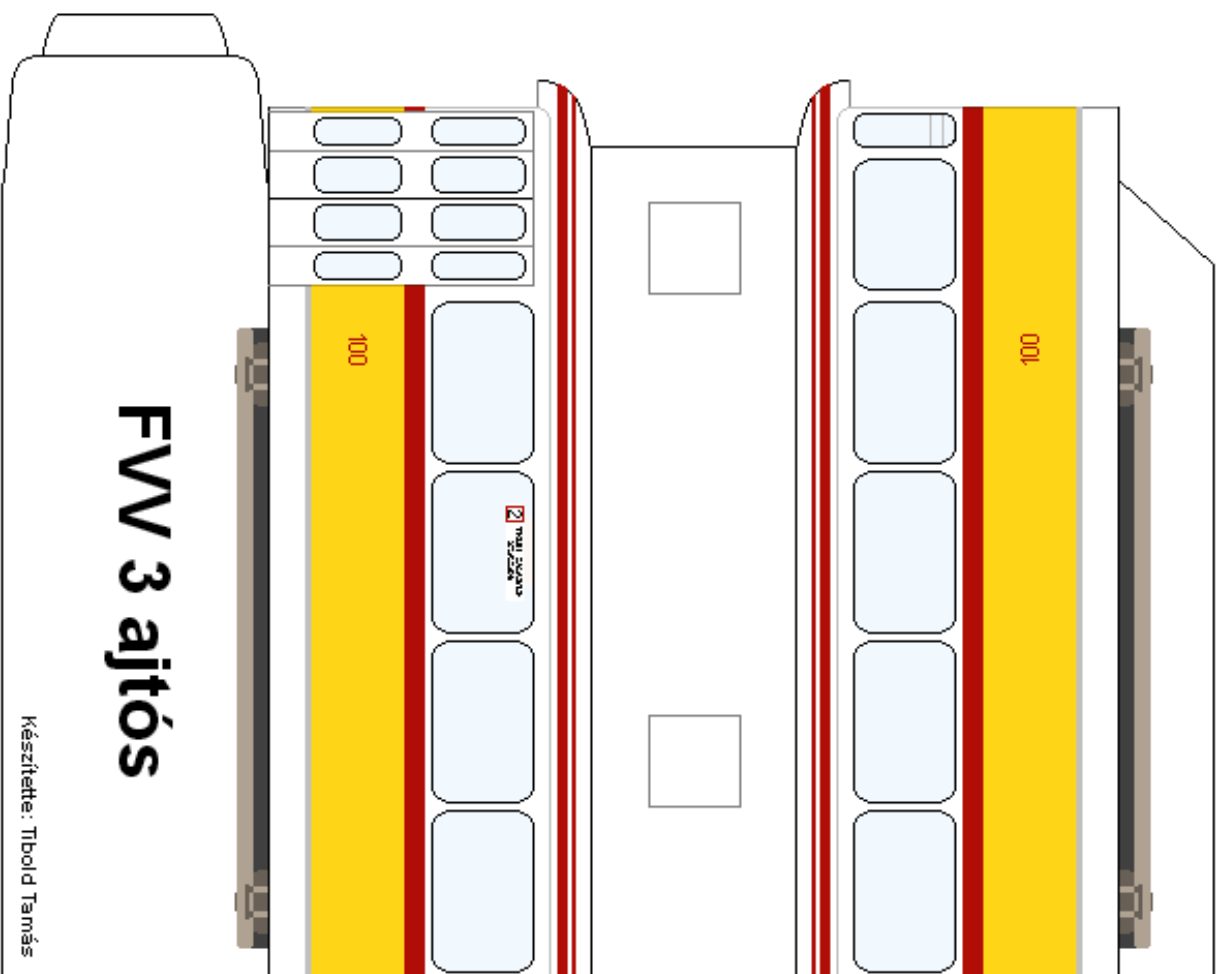
A tükröket ragaszd a helyükre!





Az ellenállás tartót ragaszd az első villamoson levő szaggatott vonalra!  
A szeddőket pedig, a ragasztási tanácsok szerint, az ellenállástartón levő szaggatott vonalra!





A csatlást ragaszd a villamos elején levő fekete kis négyzetre!

