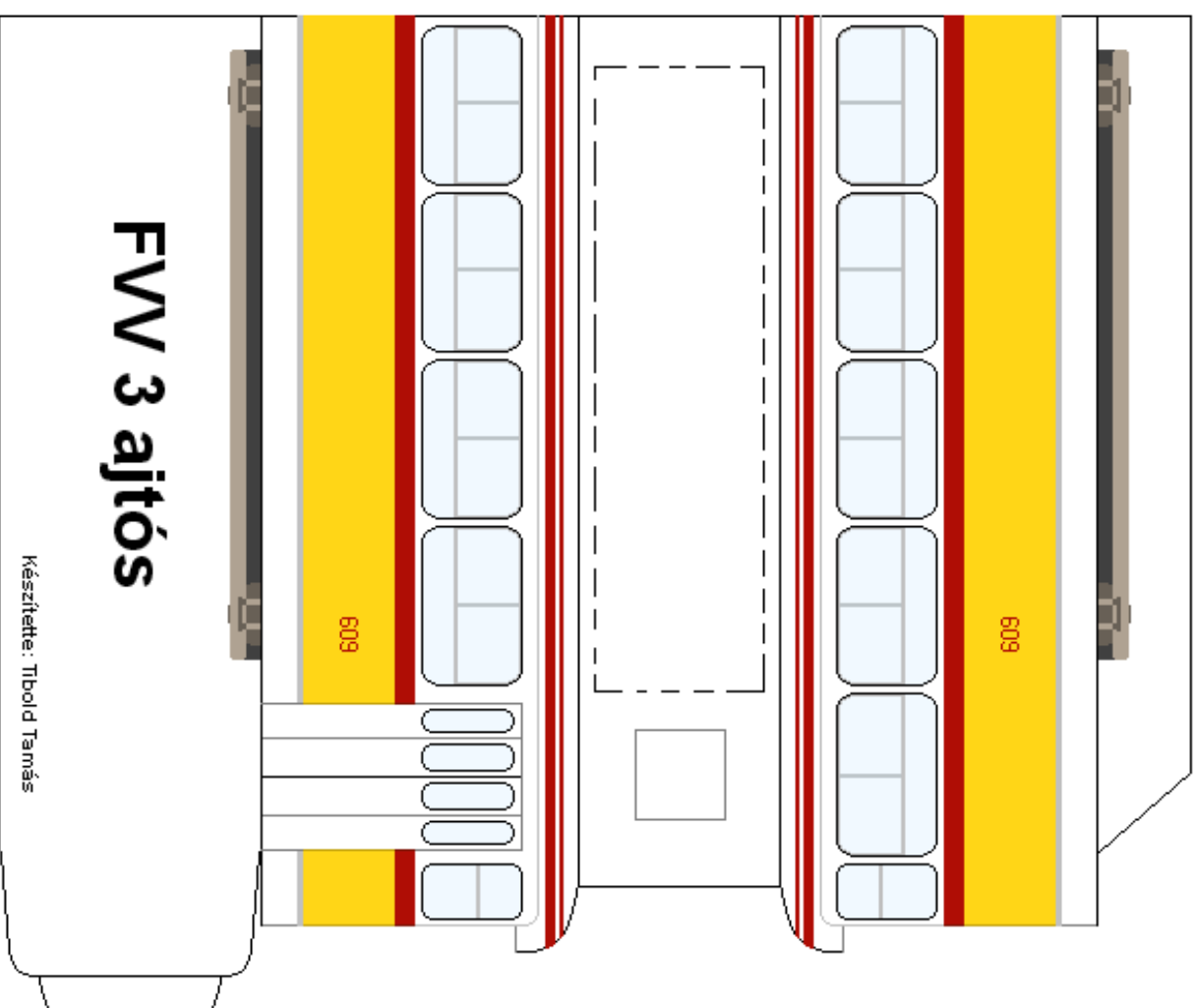
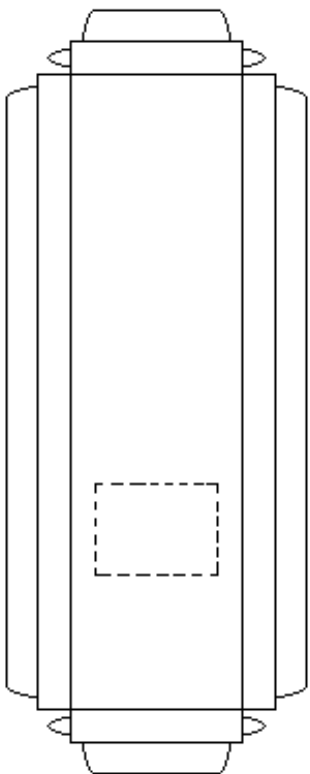


A csatlást ragaszd a villamos  
előjén levő fekete kis négyzetre!

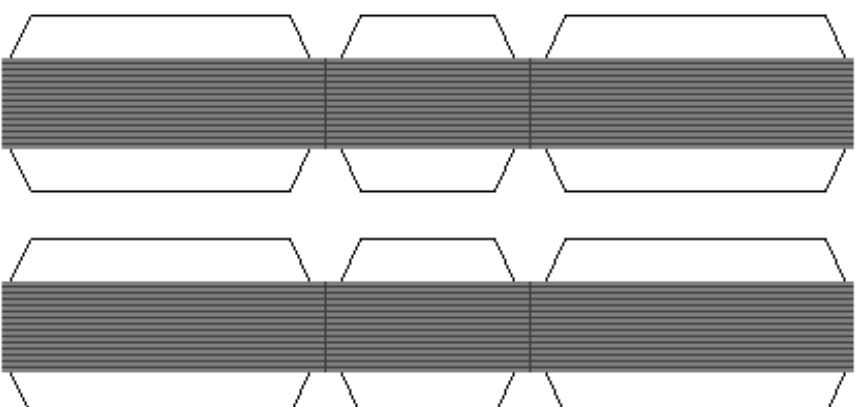
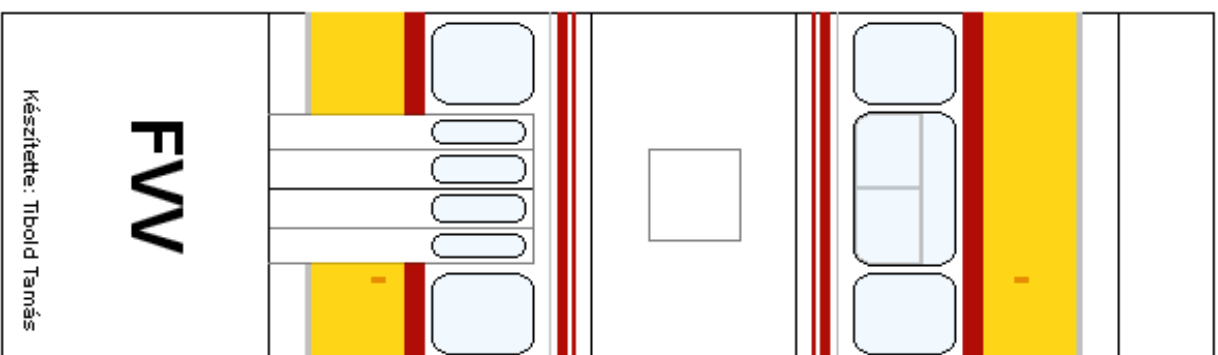
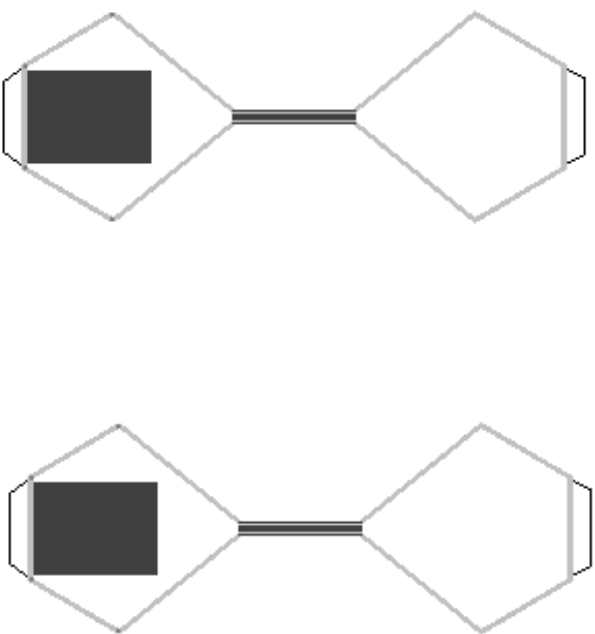
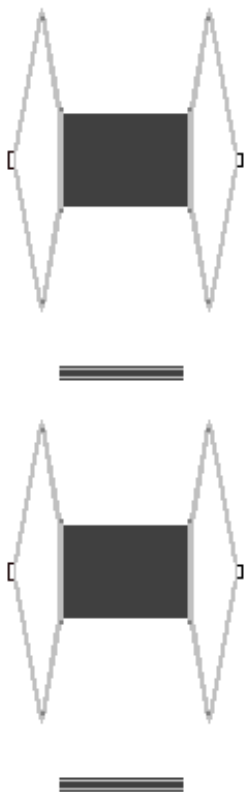


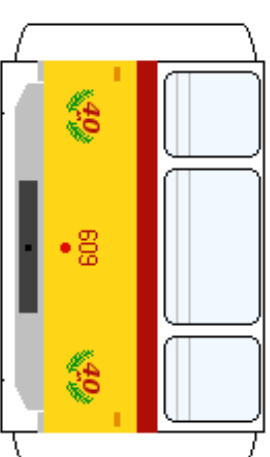
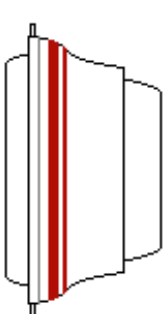
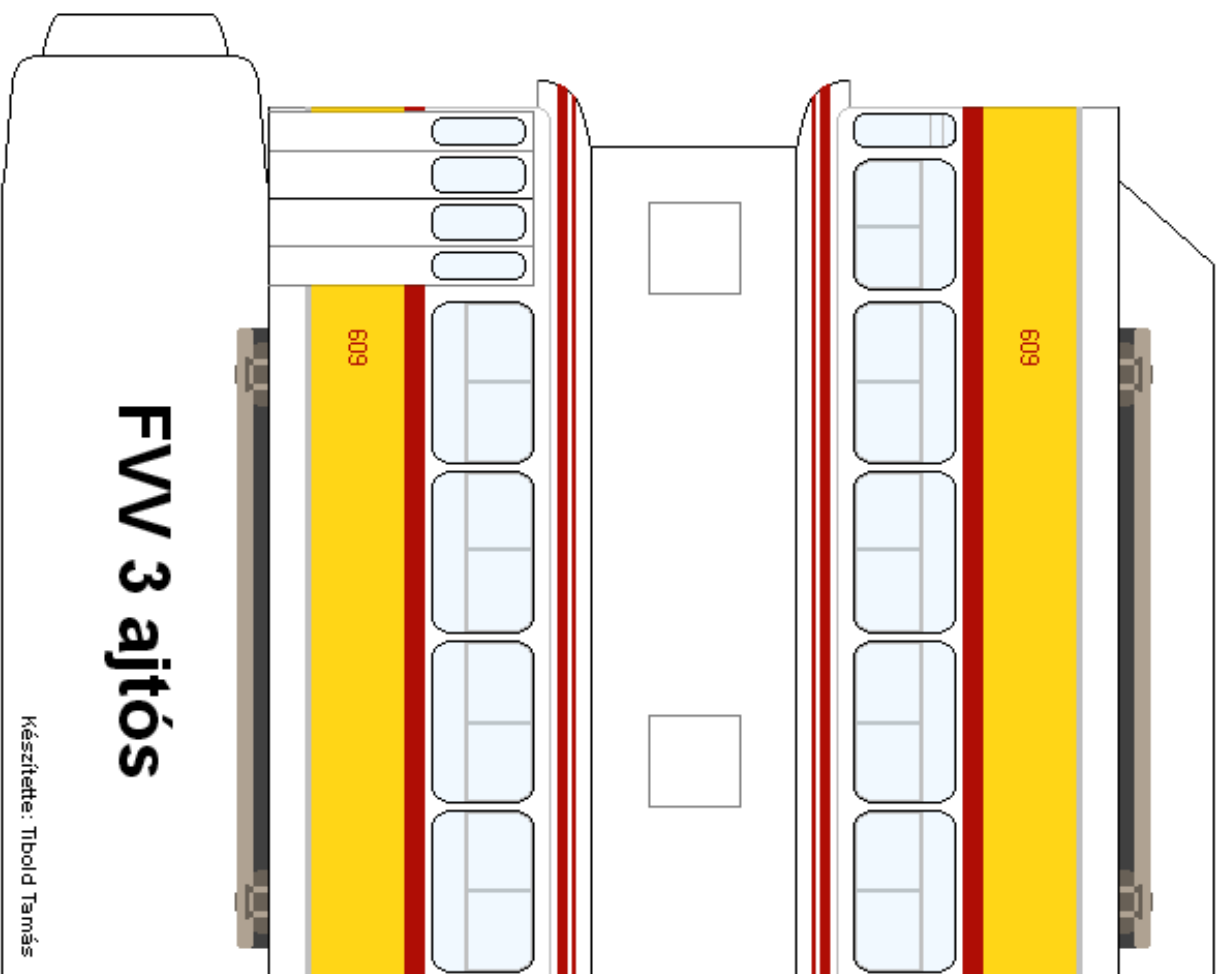
A tükröket ragaszd a helyükre!





Az ellenállás tartót ragaszd az első villamoson levő szaggatott vonalra!  
A szedőket pedig, a ragasztási tanácsok szerint, az ellenállástartón levő szaggatott vonalra!





A csatlást ragaszd a villamos  
elején levő fekete kis négyzetre!

